



PERFECT LITE

LIGHTING DESIGN SOFTWARE

UPGRADE NOTES FOR VERSION 4.85

(Released - October 2001)

1. INTRODUCTION

I'm still plodding away at converting the remainder of the DOS based Perfect Lite to a true Windows 32-bit application. The next module to be released will be the SAASTAN – User Interface in mid 2002. Nonetheless, some other minor changes and enhancements have been made to my suite of programs which I'm now making available to you.

This upgrade is only minor in nature but significant in regard to the performance of the software when run under Windows NT/2000.

Version 4.85 contains enhancements that affect most of the modules in the package. This upgrade, therefore, is a complete re-issue of ALL the program modules. This means you can throw away all the diskettes from the previous versions as they are no longer required.

As always, I am open to suggestions on future improvements, so if you have any please give me a ring on **(07) 3275 2406** or **0417 732 763** day or night or send me an email.

Complete details of the full range of my software is of course on the Internet at:

Home Page: www.powerup.com.au/~trevorc/index.htm

Email address: trevorc@powerup.com.au

2. PERFECT LITE MENU

The first menu displayed when you start Perfect Lite (Ple.exe) is shown in Figure 2.1. The following sections detail the changes/enhancements to the various modules selected from this menu.

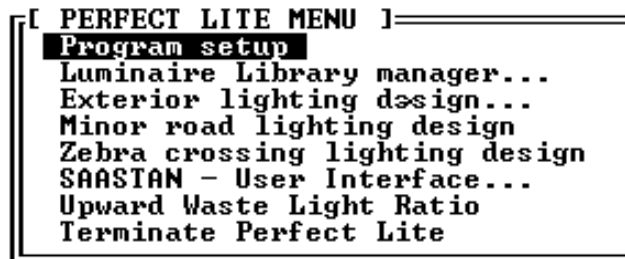


Figure 2.1

- 2.1. Program setup**
No significant changes made to this module.
- 2.2. Luminaire Library manager...**
No significant changes made to this module.
- 2.3. Exterior Lighting design**
See Section 3 below, for details on the enhancements found under this menu selection.
- 2.4. Minor road lighting design**
 - The version of the **Plespace.exe** program shipped with this upgrade is **1.64** which has only minor internal changes over the previous version. As mentioned in the last update this particular program is stand alone, that is, it can be executed directly from DOS, if desired, rather than going through the Perfect Lite menu system. To do this just set up a shortcut icon on your Windows desktop to run the 'Plespace.exe' file in the 'c:\ple' folder (or wherever you had previously installed Perfect Lite).
 - Following the release of the Pedestrian Area Lighting code (AS/NZS 1158.3.1:1999) this software has essentially been superceded by the software described in Section 4 below. However, it has been maintained in the Perfect Lite suite of programs for comparison of spacing purposes and the Code does allow, in some circumstances up to November 2001, spacing to be based on the calculation grid of this older program.
- 2.5. Zebra crossing lighting design**
No significant changes made to this module.
- 2.6. SAASTAN - User Interface**
 - The version of the **Uis97.exe** program shipped with this upgrade is **3.87** with only some minor internal changes over the previous version.
 - Once again this particular program is stand alone, that is, it can be executed directly from DOS, if desired, rather than going through the Perfect Lite menu system. This is necessary sometimes if you get an error message, using the menu system, indicating you have 'insufficient conventional memory' to run the program. To do this just set up a shortcut icon on your Windows desktop to run the 'Uis97.exe' file in the 'c:\ple\uis' folder (or wherever you had previously installed this file).
- 2.7. Upward Waste Light Ratio**
 - The version of the **Pleuwlr.EXE** program shipped with this upgrade is **1.05a** with only some minor internal changes over the previous version.
- 2.8. Terminate Perfect Lite**
No significant changes to this module.

3. EXTERIOR LIGHTING DESIGN MENU

Figure 3.1 shows the 'Exterior Lighting Design Menu' of version 4.85.

```

[ EXTERIOR LIGHTING DESIGN MENU ]
New luminaire layout
Modify/view existing luminaire layout
Define calculation field
Calculate illuminance/luminance
Uniformity windows/masked area
Quick display of calculated levels
Print calculated levels
Iso <contour> diagram - AutoCAD interface
Archive and file manager...
| <Esc> to quit Menu |

```

Figure 3.1

No significant changes to this module other than a speed improvement when run under Windows NT/2000.

4. PEDESTRIAN AREA LIGHTING SOFTWARE

The version of the **Plepal.exe** program shipped with this upgrade is **2.04** with only minor internal changes over the previous version. Remember this program is not run from the Perfect Lite menu (shown in Figure 2.1) as it is a Window's application. To run it you click on the **Start** button, select **Programs**, select **Perfect Lite** and click on **Pedestrian Area Lighting**.

5. PRINTING VIA THE PRINT MANAGERjust a reminder

Most of the newer colour Canon Bubblejet, HP Deskjet and Epson Inkjet type printers are not supplied with DOS printer drivers as they are meant only to operate with Windows 95/98/NT/2000 (the 'DOS is dead' syndrome). This subtlety may not be evident till you have purchased the printer and tried it out in your home or office. It will work quite well printing from any Windows application but not any DOS program. However, by this time it is a bit late to take it back to the shop to exchange it. Anyhow there's nothing to exchange it with as most (colour) printers now won't work with DOS anyway.

Another thing you may have noticed is that when previously running the "Program setup" module and completing screen page 4, there may not have been a 'Printer type code' that exactly matched your particular printer and you may have had to experiment with alternate codes to get one to work.

The printing method in versions 4.84 and later of Perfect Lite gets around both these situations. Even if you have an 'older' type printer (colour or black & white that does have DOS drivers) you may elect to print, from now on, through the Print Manager system described below. In fact, this will be the best method to use for future upgrades and operating system versions.

For this new printing method to operate, it is **essential** that Perfect Lite is run via the Windows operating system (as you probably do anyway) preferably **in a window** on the screen rather than full screen.

When you select to run any of the following modules, either from the main Perfect Lite menu (see Figure 2.1) or execute the program directly from DOS:-

- Minor road lighting design (PLESPACE.EXE)
- SAASTAN – Use Interface (UIS97.EXE)
- Upward Waste Light Ratio (PLEUWLR.EXE)

you will now be presented with a menu of all the printers available on your PC that can be accessed through the Print Manager, see Figure 5.1 for an example. To select a printer simply move the highlight bar over the printer name you want and press <Enter>. For

convenience, next time you run the same program, this same printer will be highlighted by default, so it is simply a matter of pressing the <Enter> key only, to make the selection (unless you want a different printer, of course).

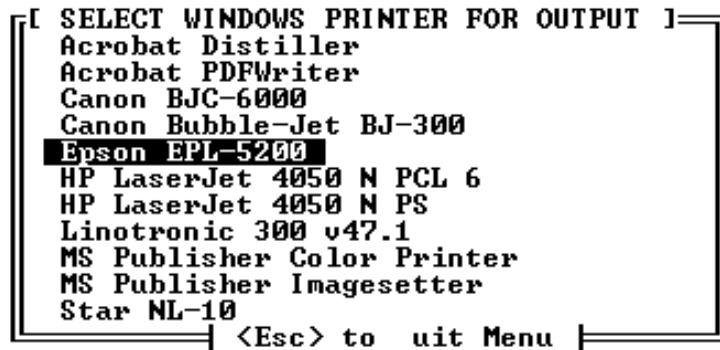


Figure 5.1

For the “Luminaire Library manager...”, “Exterior lighting design...” and “Zebra crossing lighting design” modules (see Figure 2.1), the selection of a printer, different from the default as set in the “Program setup” module, is made internally as previously.

In any of the situations above there are two types of printouts that can be generated in the Perfect Lite modules, they can contain either text or graphics.

5.1. Text Output

Text output is simply where there is only numbers and letters printed on the page (eg. list of luminaires in the library).

When you select to print text, the message, like Figure 5.2, may be seen on the screen as Perfect Lite passes the details to be printed to the Print Manager.

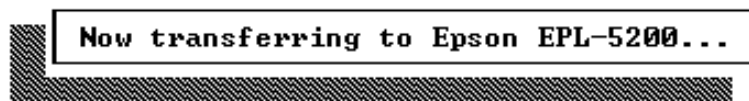


Figure 5.2

Shortly after the message disappears the nominated printer should start printing the required output. The program would then continue on as normal.

5.2. Graphics Output

Graphics output is where there is some text but also there are lines, circles, shapes etc. (eg. Iso contour diagram).

When you select to print graphics, a window like, Figure 5.3, will be seen on the lower part of the screen as Perfect Lite (in fact PrintGL/W) processes the output and passes it to the Print Manager.

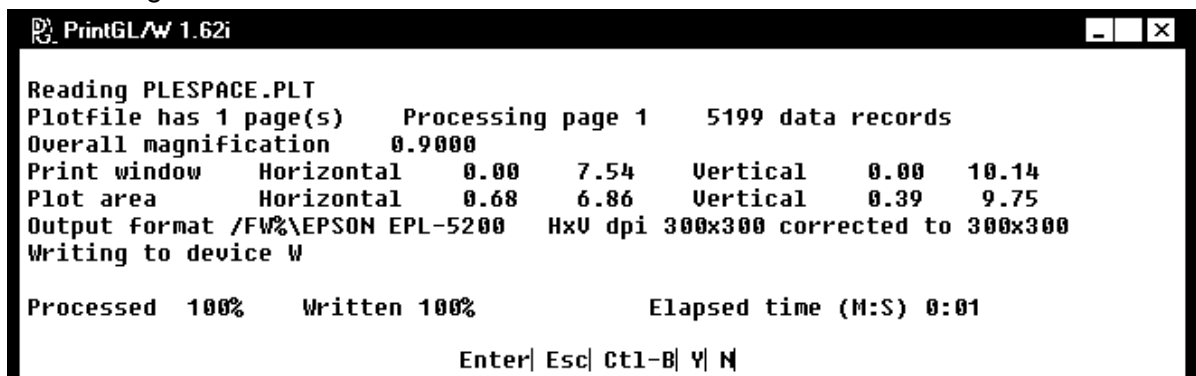


Figure 5.3

Shortly after the bottom line in this window reads “Processed 100% Written 100%”, the PrintGL/W window should close and the nominated printer should commence printing. If you are printing to a laser printer, it might be a further 10 to 20 seconds before the print

emerges. See the next section if it appears as though Perfect Lite has then disappeared from the screen.

5.3. Running Full Screen

If you run Perfect Lite full screen the window as in Figure 5.3 will not be readily visible and you may think the program has 'locked up', as nothing immediately appears to be happening either on the screen or on the printer. Also, just prior to the processing in Figure 5.3, Perfect Lite may have been minimised and once again your immediate thought may be that the program has 'crashed'. However, if you look closely, you will see Perfect Lite minimised on the Windows taskbar. You would then just click on the button icon to return the program to full screen and continue.

