

PROCEDURE TO INPUT I-TABLE DATA INTO THE PERFECT LITE FOR WINDOWS LIBRARY

The Perfect Lite for Windows Illuminance software photometric i-table Library can store both CIE/SAASTAN and IESNA formatted data. Below is a part sample of the respective two formats:-

IESNA Format (typical format for flood lights, interior luminaires & street lights)

```

IESNA:LM-63-2002
[TEST] Test Luminaire
[TESTLAB] Xcel Photo Lab
[ISSUEDATE] 01-01-2004
[MANUFAC] U-Beaut Lighting Company
[LUMCAT] SLPE-4567
[LUMINAIRE] Sample Street Light Luminaire
[LAMPCAT] HPS250 Clear
[LAMP] 250 watt HPS
TILT=NONE
1      827      1      20      13      1      2      0.160  0.250  0.065
1      1      39.53
0      5      15      25      35      45      55      65      75      85      95      105
115    125    135    145    155    165    175    180
0      30      60      90      120    150    180    210    240    270    300    330
360
346    364    340    269    187    116    69      37      13      3      0      0
0      0      0      0      0      0      0      0
346    355    324    264    186    120    75      48      33      21      0      0
0      0      0      0      0      0      0      0
346    348    310    239    173    128    99      78      65      48      0      0
0      0      0      0      0      0      0      0
346    333    278    207    152    121    101     86      73      58      0      0
0      0      0      0      0      0      0      0
346    326    259    199    154    127    110     94      83      65      0      0
0      0      0      0      0      0      0      0
    
```

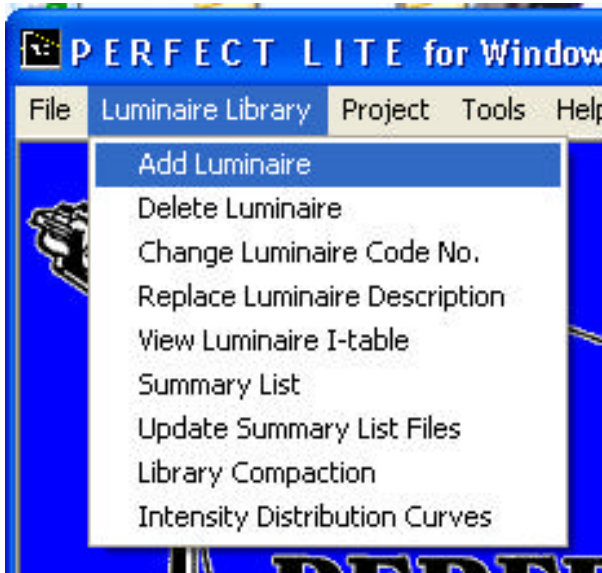
CIE/SAASTAN Format (typical format for street lights)

```

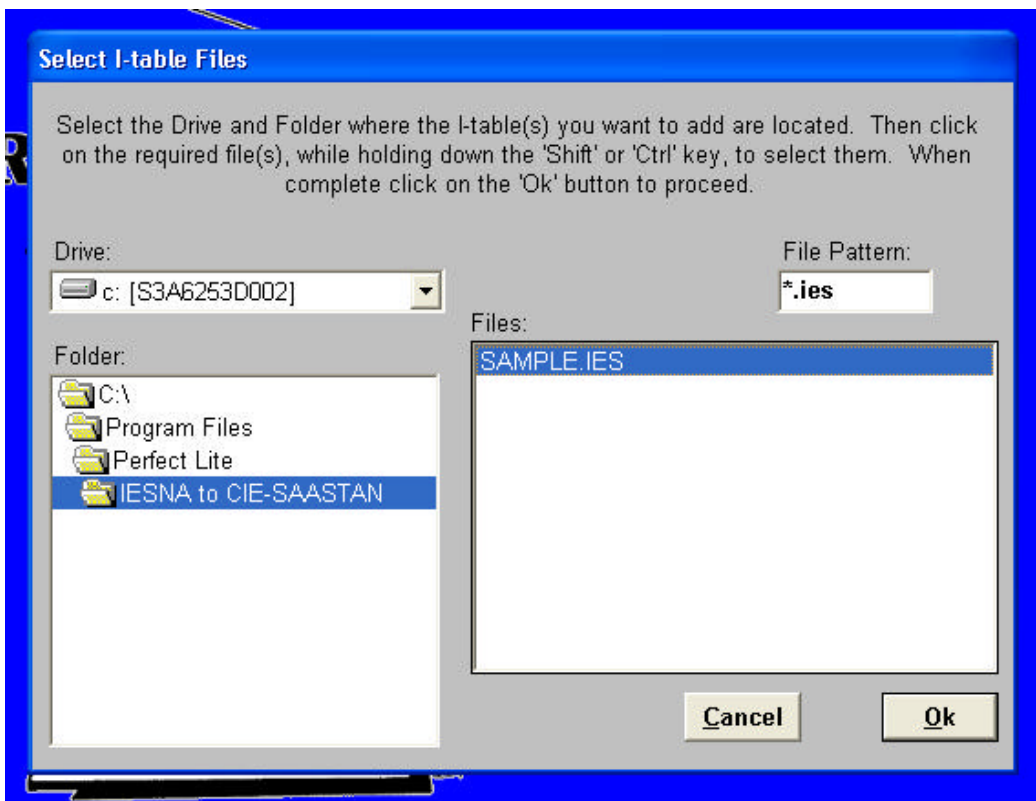
1      1      0      XYZ-1234 HPS250
189 189 189 189 189 189 189 189 189 189 189 189 189 189 189 189 189 189 189 189 189
189 189 189 189 189 189 189 189 189 189 185 186 189 190 190 188 187
188 190 189 188 187 187 191 190 190 190 188 186 185 184 182 178 177
174 170 165 163 167 172 177 179 179 180 186 191 194 198 203 206 201
207 208 208 205 200 194 186 179 172 166 157 145 135 121 136 152 161
166 168 172 180 188 202 215 224 233 238 237 233 225 215 205 192 177
167 160 153 141 126 113 95 113 135 140 142 145 152 165 179 197 215
233 243 248 243 236 226 212 194 177 159 146 136 130 121 104 97 86
.
.
.
.
.
96 110 120 126 127 138 147 164 180 212 235 251 252 243 225 203 182
162 143 128 117 109 103 92 82 73 65 83 102 110 116 124 131 142
159 183 211 235 254 260 242 218 193 166 140 123 111 104 97 92 82
68 61 61 79 96 105 113 120 130 145 165 188 213 238 257 263 244
218 195 168 140 123 110 103 98 90 75 65 60 59 75 94 104 109
117 130 149 170 192 217 242 260 268 249 224 199 168 143 125 113 105
100 94 82 65 60 61 72 89 102 107 115 131 152 174 197 222 247
0 0 0
    
```

For ease of input it is best if you only load files that you really need, don't clutter up the Library with i-tables that you are not going to use.

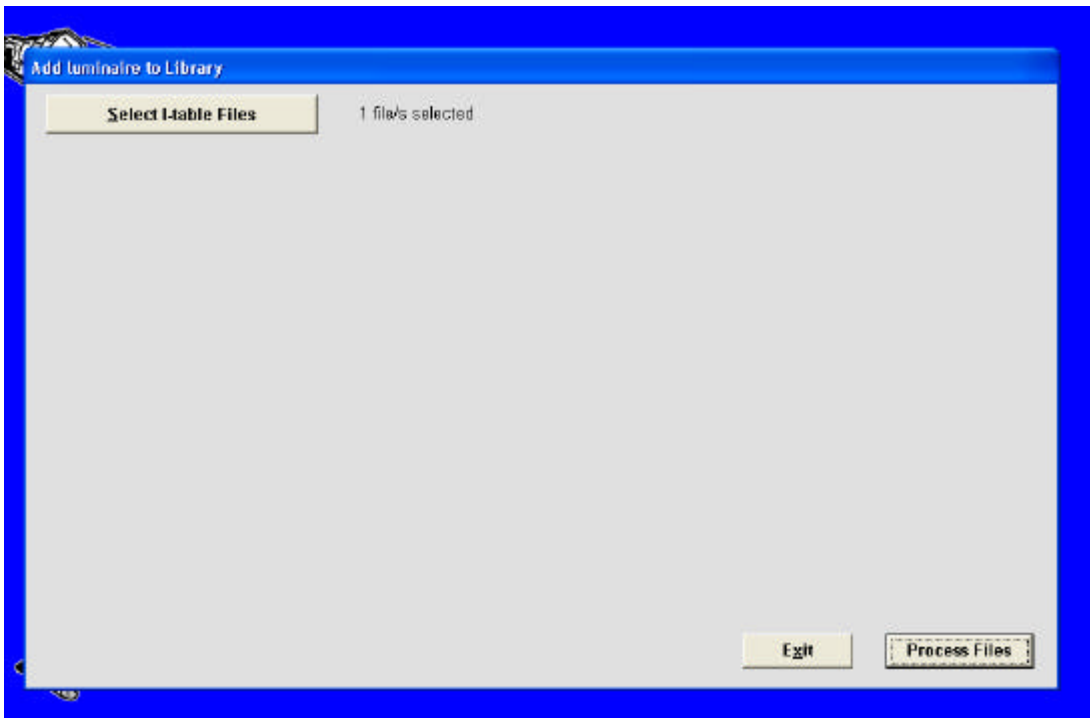
After starting Perfect Lite for Windows in the usual way, select the **Luminaire Library** menu then click on **Add Luminaire**.



You would then select the i-table files you want to add using the dialog box. Multiple files can be selected using the 'Shift' or 'Ctrl' keys.

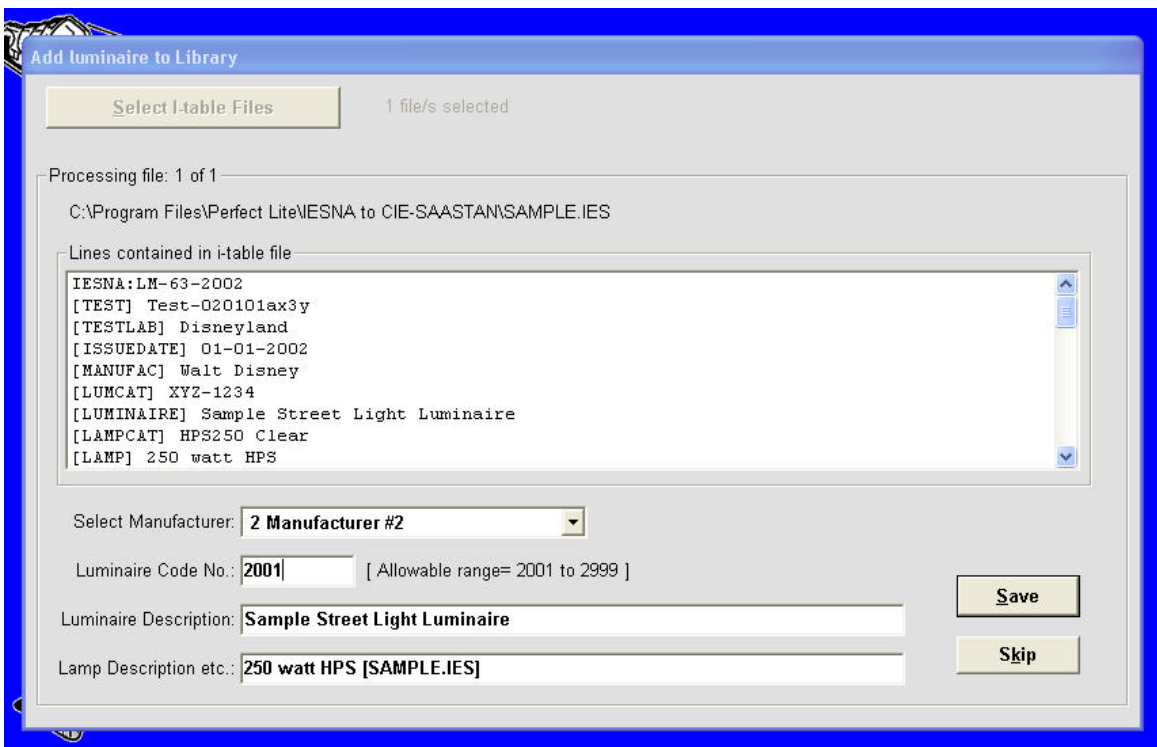


After clicking on **Ok**, the screen will change to show the number of files selected, click on the **Process Files** button to continue.

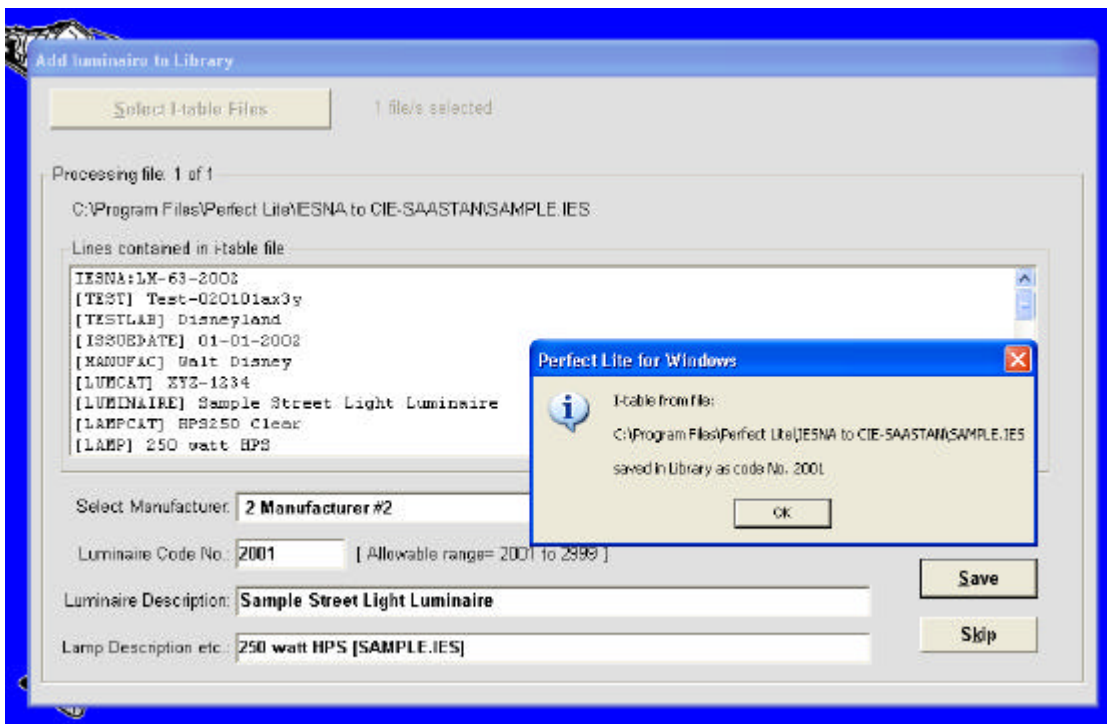


On the following screen you would then select the respective manufacturer name from the drop-down list box. You also enter a code number, a description for the luminaire and the lamps in subsequent fields. N.B. It is always a good idea to include the original file name as part of the description.

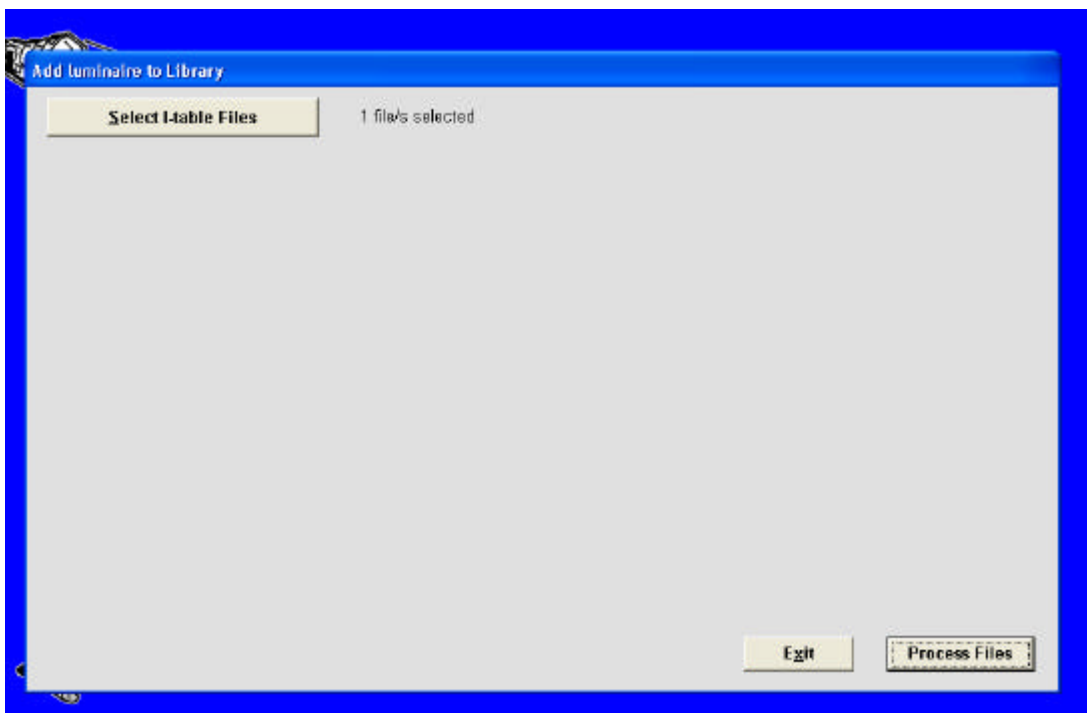
Click on the **Save** button for the program to add this luminaire into the Library.



A couple of messages will flash onto the screen indicating progress and a final completion.



The process will then repeat itself for any more files you have selected.



To finish, click on the **Exit** button.

Prepared by Trevor Caswell
April 2011